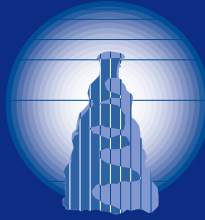


New  
and  
Remanufactured



# WESTERN SLOPE INDUSTRIES, INC.

*Serving the Converting Industry*



## Gladiator

WINDOW MACHINE

Known Worldwide for  
Durability and Dependability

## Available as

### New or Remanufactured

Western Slope Industries is the only source for a *NEW* Staude Gladiator Window Machine. Nothing outlasts the Gladiator in dependability and durability. The large installed base of Gladiators still in service around the world will attest to that. Since acquiring the Staude line in 1992, WSI has continued to upgrade the Gladiator Window Machine and offers a wide range of options for high speed windowing applications... and, WSI backs all new and existing Staude Gladiators with training, parts and service.

### New Machines

*Completely new* Staude Gladiators are available in standard 42-inch wide machines or a 60-inch wide design.

### Remanufactured Machines

The remanufactured Gladiator - WSI's top selling window machine - offers top-of-the-line performance as well as substantial savings over new window machines.

Standard remanufactured Gladiators are *completely dismantled* to the frames, steam cleaned and painted prior to assembly.

The standard remanufactured Staude Gladiator is configured as a dual-lane machine with:

- Dual-lane bottom-bump feeder
- All new conduit, wiring and operator stations
- New 15 HP drive motor and controller
- New high-efficiency blower
- New coated vacuum cylinder
- New full-width, Gravure style glue pot
- New Graham Drive for film control
- Auto-impression roll
- Easy-Lube system
- Electronic counter/rate meter

### Warranty

Every new or remanufactured WSI Staude Gladiator carries our standard limited warranty.



### Feed Systems

Western Slope Industries offers several different feed systems to suit *your* unique production requirements.

#### Standard - Dual-lane Vacuum-assisted Bottom Bump Feeder

Developed originally for the Gladiator, this WSI designed feeder is not only fast to set up, but easy to operate. Standard feeders include four vacuum belt modules (two per lane), each with its own reversible carbide-tipped feed gate. Spring tensioned vacuum feed belts assure positive and uniform feed. PIAB™ vacuum generators are standard. An optional vacuum pump is available.

#### Optional - Dual-lane Vacuum Feeder

This feeder utilizes split polyurethane rolls for faster and easier set up. A variable speed creeper chain drive helps control feeding of curled stock. PIAB™ vacuum generators are standard. An optional vacuum pump is available.

#### Optional - Dual-lane Top Combing Feeder

This traditional low-cost feeder, once supplied as standard on the original Staude Gladiator window machines, is available from Western Slope Industries.

### Machine Configuration

The standard Gladiator window machine is equipped for dual-lane operation. Cams for 1-up, 2-up or 3-up configuration are included. Optional parts for either 3-lane or 4-lane operation can be factory installed or easily added in the field.



#### Gravure Style Glue Pot

A full-width glue pot, with a separate gearmotor to provide constant glue agitation, is standard on new and remanufactured Gladiators. Air cylinders automatically separate the glue rolls when the machine stops and a 'manual' mode is available for jogging during set up. The entire assembly slides out for faster and easier clean up.

#### Pneumatic Auto Impression Roll

Photoeyes on each lane detect missing blanks and signal the impression roll to drop preventing glue from transferring to the impression rolls.

#### Electronic Counter

An easy-to-use electronic counter is now standard. An 8-digit LED display with large, easy-to-read characters, is switchable to indicate total, production rate, or programmed batch figures. Optional counting of both lanes is available.





### Coated Vacuum Cylinder

The "heart" of any window machine is the vacuum cylinder. Every new or remanufactured Gladiator includes a new vacuum cylinder assembly - complete with shaft, end bearings, valve plates and full-width hard anvils - all precision ground and balanced for optimum operation. Each cylinder is coated with a Teflon® penetrated hard coat anodizing for longer life and easier clean up.

### Pneumatic Cam Follower

An air cylinder replaces the original cam spring providing longer life and lower maintenance. Air pressure can be adjusted to insure adequate cam pressure during high speed operation.



### High-efficiency Blower

A highly efficient, yet extremely quiet, blower is machine mounted for easier machine installation.

### Precision Film Control

A Graham adjustable speed drive insures precision film cut lengths to  $\pm 1/16$ " and can be adjusted while running. Optional dual-film feed is available. For pre-printed film applications, optional single and dual-lane photo film registration systems are available.



### Split Delivery Belt Assembly

The re-designed delivery belt assembly now has thirteen 2-inch wide belts and uses self-aligning bearings to eliminate tracking and maintenance problems.

### Options available —

- Vacuum feeder - 2, 3 and 4-lane
- Top combing feeder - 2, 3 and 4-lane
- Hardware for 3 & 4-lane operation
- Photo film register systems
- Slitting and perforating accessories
- Variable frequency AC drives
- Squaring/stacking delivery systems
- Extra film reel racks

### Reliability and Productivity

#### You Can Count On

The Gladiator's long-standing reputation for rugged and reliable operation is unequalled in the folding carton industry. Years of dependable service, longevity, and popular demand make the Staude the benchmark for window machines.

Let Western Slope Industries show you how the latest upgrades have improved this already impressive "workhorse" of the industry - and how a new or remanufactured Staude Gladiator is *the* machine to consider.

Call today for pricing, availability, or to arrange a demonstration run with *your* carton stock.

### Increased Speed, Performance and Flexibility

When considering a window machine for competing in today's market, consider a new or remanufactured Staude Gladiator for increased speed, performance and flexibility - at an affordable price.

### Upgrades and Accessories for Existing Machines

Considering improvements to your Staude Gladiator? Accessories and upgrades are available for field installation on existing machines.

### New Wide-width Machines

In addition to the standard 42-inch machine, WSI can provide new Staude Gladiators for carton widths up to 60 inches.

### Corrugated Applications

Considering applying windows to corrugated material? Installed on a Staude Gladiator, the WSI bottom bump feeder allows corrugated blanks to be easily fed without marking or crushing.

### Special Applications

Western Slope Industries has had years of experience in designing and manufacturing converting equipment for special applications. Western Slope Industries' Engineering and Service Departments can assist you with your special converting needs.

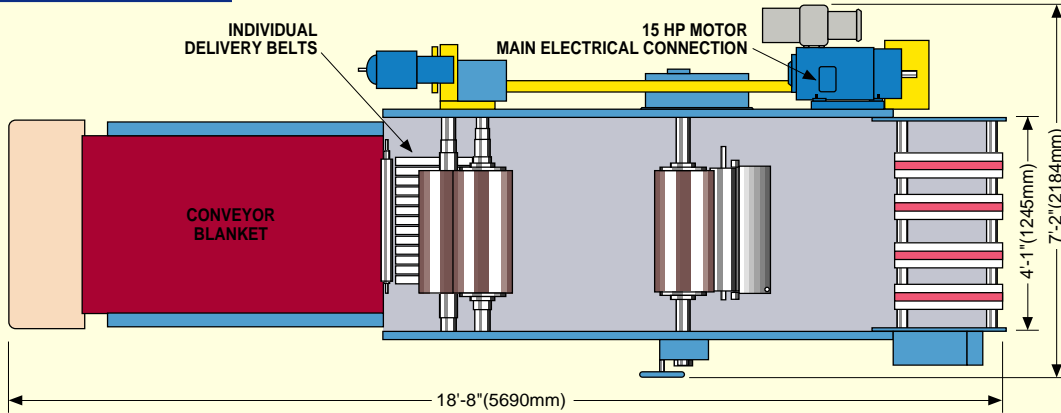
### Manufacturing Quality

Western Slope Industries has been a Certified ISO 9001:1994 company since 1995. WSI received approval from SGS International Certification Services, a certification company accredited by the ANSI-RAB.



## Staude Gladiator Specifications and Dimensions\*

### Floor Plan



### Blank Data

The Staude Gladiator Window Machine handles most types of window film.

#### Film Roll

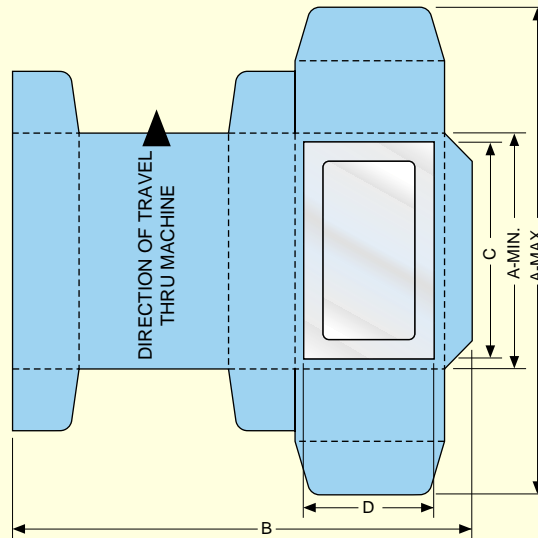
- Should be 1" (25.4mm) wider than the window.
- Should be 12" (305mm) maximum diameter.
- Should have a 3" (76.2mm) core diameter.

#### Pocket Length

- 42" (1067mm) 1-up operation
- 21" (533mm) 2-up operation
- 14" (356mm) 3-up operation

#### Glue Die

- $\frac{3}{16}$ " (4.8mm) high



Output depends on material, size and shape of blank and film

Dimensions in parentheses are millimeters

	SINGLE-LANE			DUAL-LANE		
	1-up	2-up	3-up	1-up	2-up	3-up
Max. Rate per Min.	150	300	450	300	600	900
<b>A</b> Blank Length	5 - 40" (127 - 1016)	5 - 19" (127 - 483)	5 - 12" (127 - 305)	5 - 40" (127 - 1016)	5 - 19" (127 - 483)	5 - 12" (127 - 305)
<b>B</b> Blank Width	4 - 42" (102 - 1067)			4 - 20" (102 - 508)		
<b>C</b> Film Length	2.5 - 24" (64 - 610)	1.25 - 18" (32 - 457)	1 - 12" (25.4 - 305)	2.5 - 24" (64 - 610)	1.25 - 18" (32 - 457)	1 - 12" (25.4 - 305)
<b>D</b> Film Width	1 - 28" (25.4 - 711)			1 - 13.625" (25.4 - 346)		

### Shipping Weight

Approximate Total Gross Shipping Weight: 12,500 lbs. (5675 kg)

\* Specifications and dimensions are subject to change without notice.  
Teflon® is a registered trademark for DuPont fluorocarbon resins.  
PIAB™ is a registered trademark of PIAB AB.

### Parts and Service

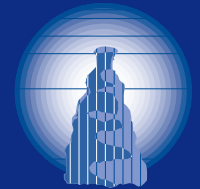
Western Slope Industries is the premiere supplier of parts, accessories, and remanufactured machines in the carton converting industry. WSI backs all existing and new Staude Gladiator window machines with an extensive parts inventory. Our service technicians are available for installations, upgrades and operator and maintenance training.

Having difficulty obtaining parts for your converting equipment? WSI has parts available for:

- Staude
- Post
- International
- Jagenberg
- Bobst
- Call WSI for details on how we can help.

### Trade-Ins

Trade-ins of used straight-line, right-angle and window machines considered. Call us with details of your surplus equipment.



*Serving the Converting Industry*

## WESTERN SLOPE INDUSTRIES, INC.

2524 Foresight Circle  
Grand Junction, CO 81505-1019  
USA  
Phone: 970/241-2085  
Fax: 970/245-6315

# TOLL FREE 1-800-338-1455